

# Setting Oracle Passwords for the EDW

## Setting the Oracle Passwords

When a BusinessObjects 5i or WebIntelligence document retrieves data from the Enterprise Data Warehouse (EDW), it accesses an Oracle database. This is also true of other report creation programs such as MS Access, SAS, and Crystal Reports. There are many Oracle databases (sometimes referred to as an "instance") on the EDW, and while the database logonids for each database that you are authorized to access should be the same, it is up to you to maintain individual passwords for each of those databases. Depending upon your preference, those Oracle passwords may or may not match each other.

**NOTE:** If a Business Objects application (BusinessObjects 5i or WebIntelligence) is used to access an Oracle EDW database, ***your Business Objects id and password must match your Oracle id and password.*** Thus, each time you change your Business Objects password, you will need to make a corresponding change to your Oracle database password(s).

Below we will look at two methods that can be used to change an Oracle database password.

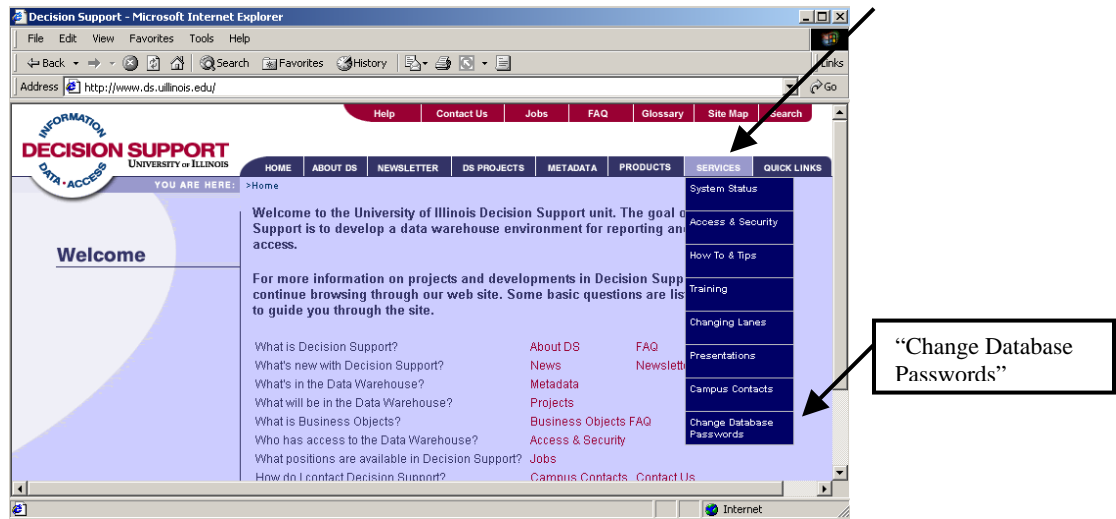
## Changing an Oracle Password Through the Decision Support Web Site

The easiest method for changing your Oracle password is to do it through the Decision Support Web site, which is found at:

<http://www.ds.uillinois.edu/>

The specific location can be reached by selecting "**Change Database Password**" on the "**Services**" drop down tab.

"Services" tab

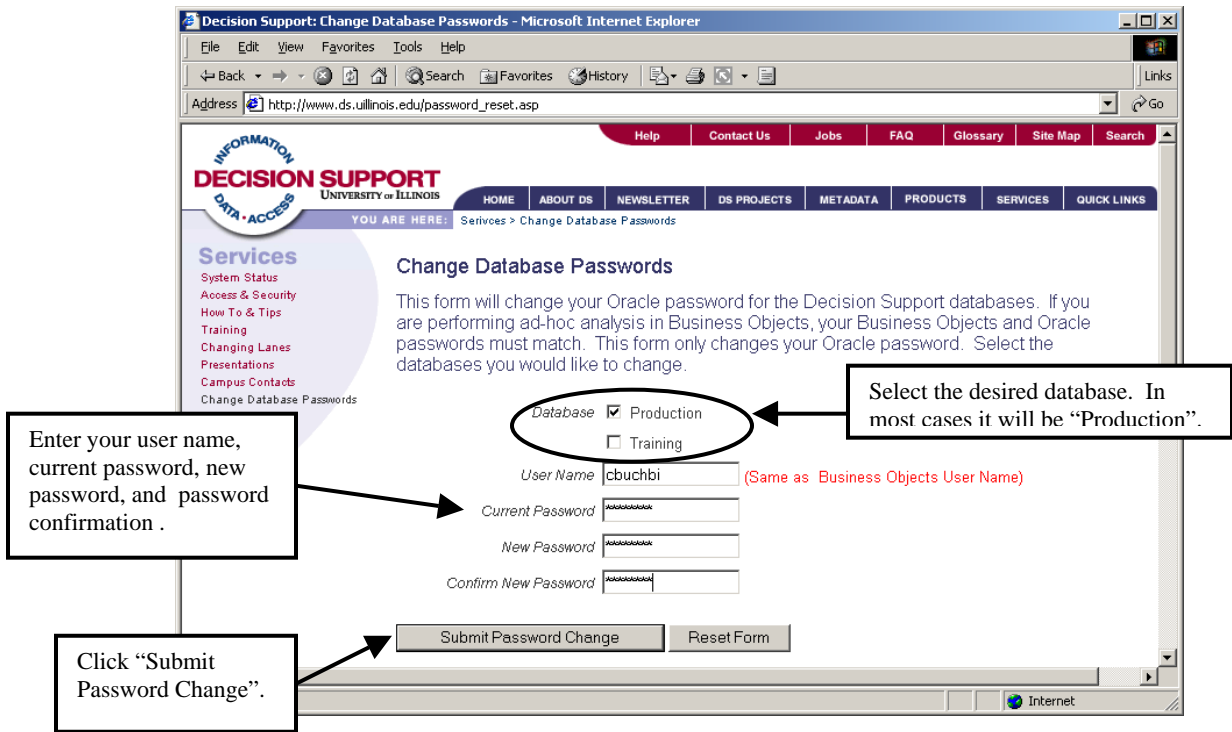


The following Web page will present itself. On that page you will:

- Select the database associated with the password that you are about to change. Note that sometimes this database may also be referred to as a “domain”, such as the “production domain”.

In the vast majority of cases, the EDW “Production” database should be checked. For those users who need to change passwords for other databases (such as the “development” database), the method using the “SQL Plus” tool, described later in this document, should be used.

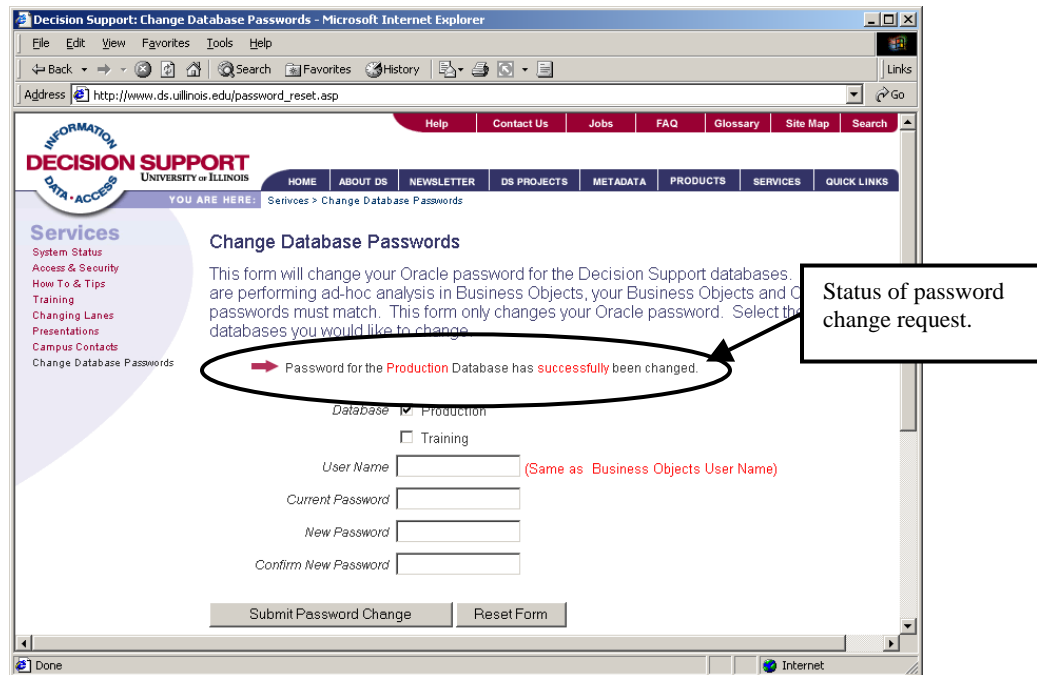
- Enter the “User Name”, which is your logonid for both InfoView/EDDIE and Oracle.
- Enter your current password, a new password, and new password confirmation. Again, the logonid, new password, and new password confirmation will need to match your InfoView/EDDIE password if you plan to use InfoView/EDDIE, WebIntelligence or BusinessObjects 5i.



- Finally, click the **"Submit Password Change"** button at the bottom of the page.

If the change is successful a message will appear on the Web page stating:

**Password for the Production database has successfully been changed.**



- If you enter an incorrect current password or mismatch the new password with the confirmation password, descriptive error messages will appear at the same location where the successful confirmation message appears.

If the password change is successful, and the new logonid/password combination matches the combination for InfoView/EDDIE, then any of the BusinessObjects viewing or reporting tools should work for which you have been granted authority to use.

**NOTE:** You will be notified by Decision Support as to your InfoView/EDDIE logonid and starter password. The document titled “Change Your InfoView Password” provides directions for changing your InfoView/EDDIE password. It can be found in the “Services/How To & Tips” section of the Decision Support Web site under the “Business Objects – InfoView” section.

## Changing an Oracle Password Using “SQL Plus”

For those who must access databases other than the “production” or “training” EDW Oracle databases, another tool must be used to change your Oracle password. In those cases you can use a software utility named “SQL PLUS”, which is found in your Oracle “Start Menu” program group.

In the following directions for using SQL PLUS, please keep in mind that the Windows “Start” menu on each computer may differ depending on individual modifications and choices that have been made.

1. Click the “**Start**” button on the Windows Task Bar.
2. Click “**Programs**”.
3. Click the “**Oracle-OraHome817**” folder.
4. Click the “**Application Development**” folder.
5. Click “**SQL Plus**”.

At this point the “**Log On**” dialog box will be displayed.

Enter the following items:

6. **User Name:** This is most likely to be your University “**netid**”.
7. **Password:** Enter your current password (a starter password is your “**netid backwards**” with a “**3**” appended).
8. **Host String:** Enter the database or “instance” name. Currently, this is most likely to be “**dsprod01**” (the production database) or “**dsvlp01**” (the development database).

Once the items above are entered:

9. Click “**OK**”.

10. At the "**SQL>**" prompt, enter the word "**password**".
11. At the "**Old password:**" prompt, enter your default (i.e. starter) or current password.
12. At the "**New password:**" prompt, enter your new password.
13. At the "**Retype new password:**" prompt, re-enter your new password.
14. At the "**SQL>**" prompt, enter "**exit**".
15. If you have access to additional Oracle database servers, repeat steps 1 through 8 using the other Host String (e.g. "**dsvlp01**" or "**dsprod01**").